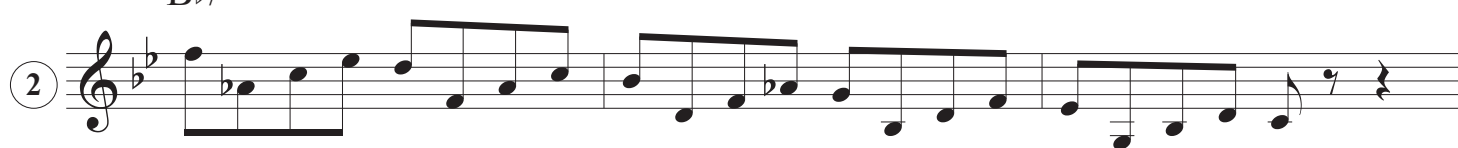
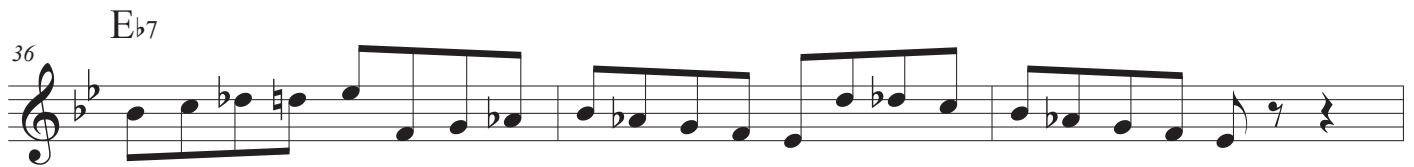
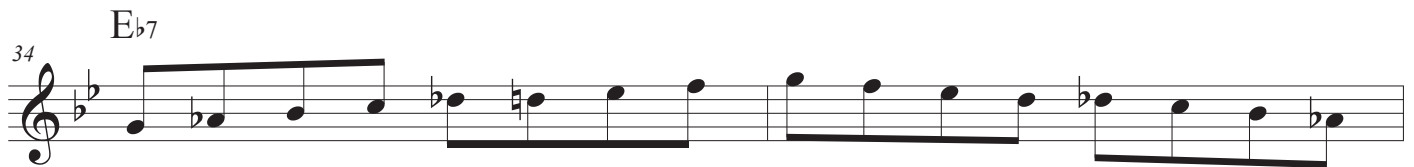
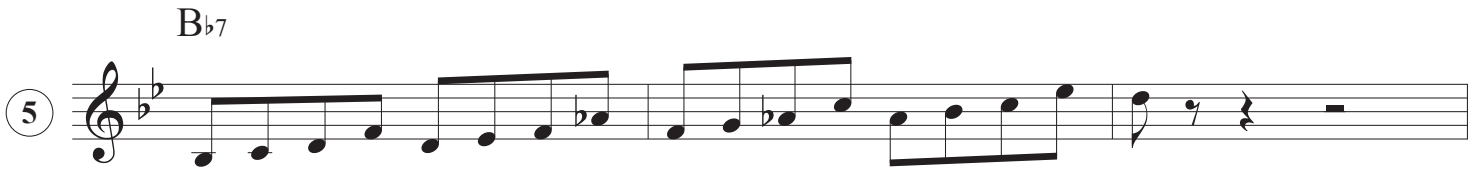


## DOMINANT SCALE WORKOUTS

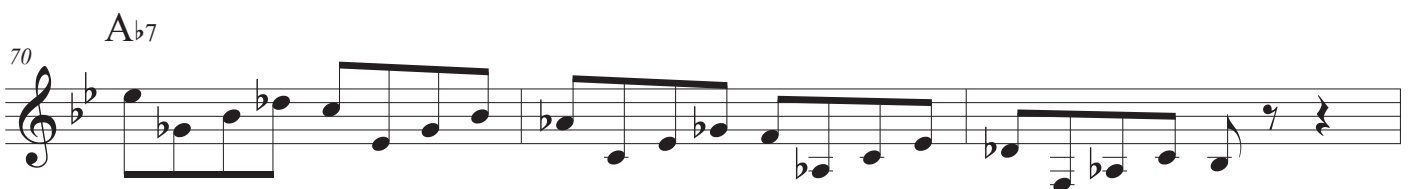
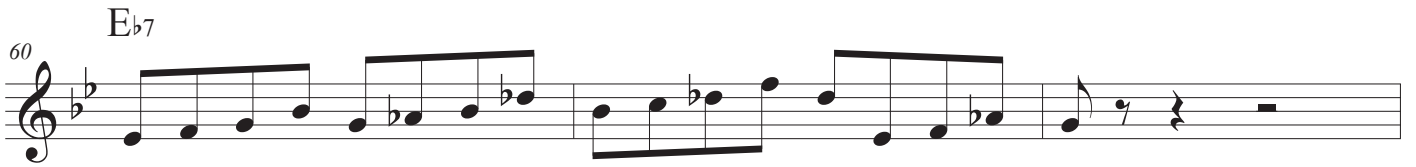
B $\flat$ 7B $\flat$ 7B $\flat$ 7B $\flat$ 7B $\flat$ 7B $\flat$ 7B $\flat$ 7B $\flat$ 7

# DOMINANT SCALE WORKOUTS

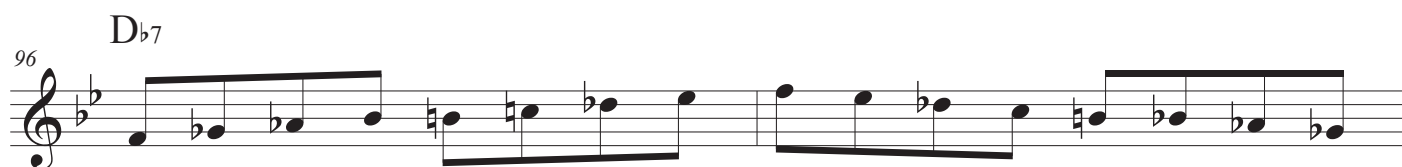
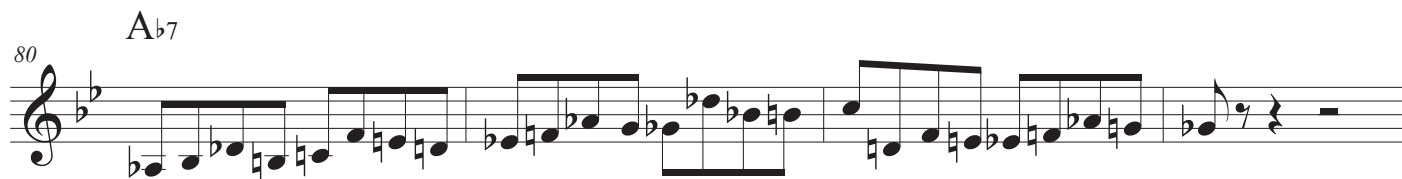


# DOMINANT SCALE WORKOUTS

3



# DOMINANT SCALE WORKOUTS



## DOMINANT SCALE WORKOUTS

5

98 D $\flat$ 7 5

[illegible][illegible]

III  $D7^b9$

[illegible][illegible]

122  $D_b7$

The image shows a single musical staff for measure 122. The key signature has two flats (B-flat and E-flat). The measure begins with a  $D_b7$  chord, indicated by a flat symbol over the letter 'D'. The notation includes a series of eighth and sixteenth notes, some beamed together, and a final quarter rest. The notes are: B-flat (quarter), A-flat (eighth), G-flat (eighth), F (quarter), E-flat (quarter), D-flat (quarter), C (quarter), and B-flat (quarter).

# DOMINANT SCALE WORKOUTS

6 F<sub>7</sub>



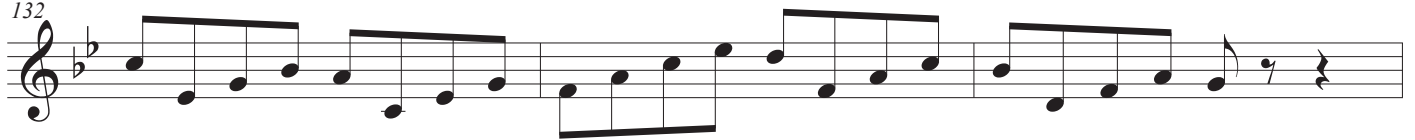
127 F<sub>7</sub>



129 F<sub>7</sub>



132 F<sub>7</sub>



135 F<sub>7</sub>



138 F<sub>7</sub>

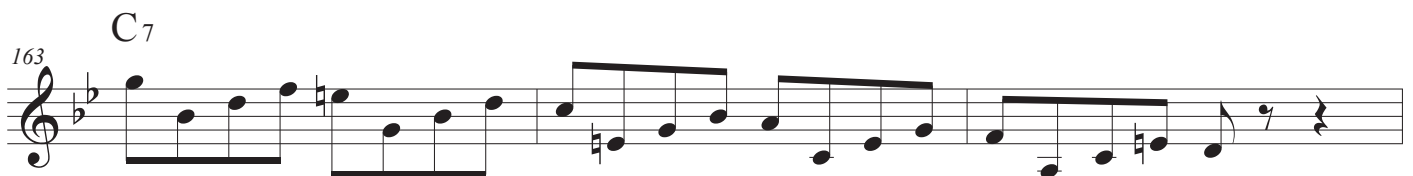


142 F<sub>7</sub>



146 F<sub>7</sub>





# DOMINANT SCALE WORKOUTS

8 <sup>173</sup> C<sub>7</sub>

177 C<sub>7</sub>

180 C<sub>7</sub>

184 C<sub>7</sub>

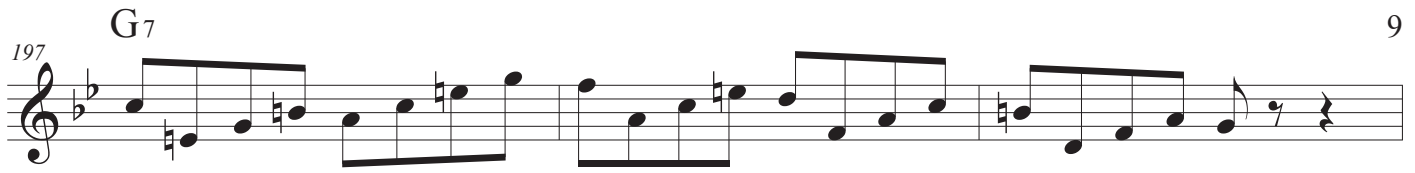
⑩ G<sub>7</sub>

189 G<sub>7</sub>

191 G<sub>7</sub>

194 G<sub>7</sub>





# DOMINANT SCALE WORKOUTS

10 D<sub>7</sub>  
222

225 D<sub>7</sub>

228 D<sub>7</sub>

231 D<sub>7</sub>

235 D<sub>7</sub>

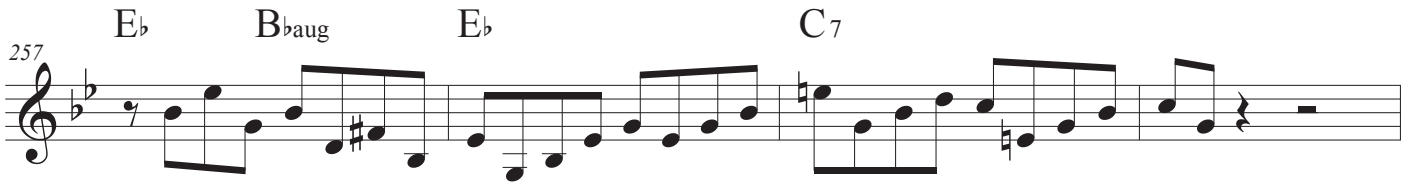
239 D<sub>7</sub>

242 D<sub>7</sub>

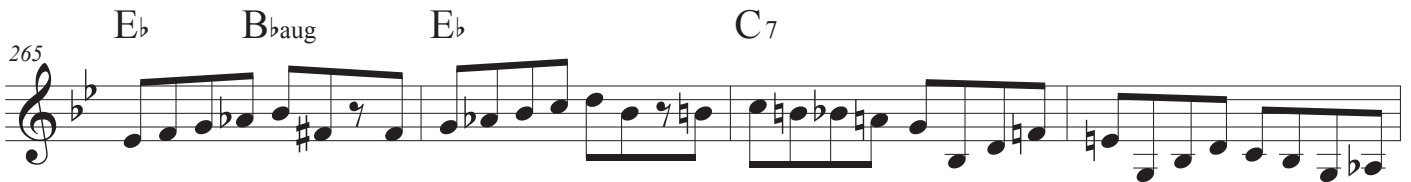
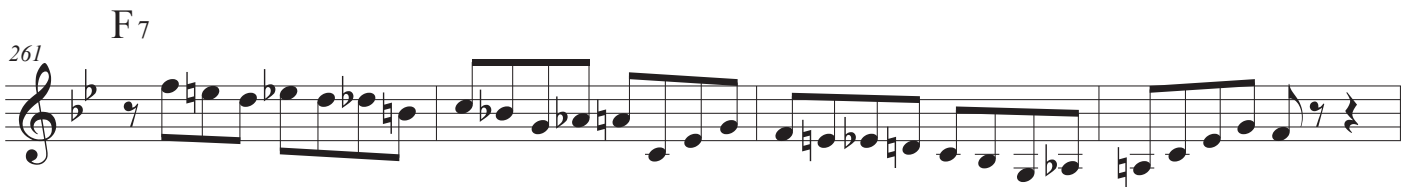
246 D<sub>7</sub>



It had to be you - #1



It had to be you - #2



It had to be you - #3



It had to be you - #4



# DOMINANT SCALE WORKOUTS

12 F<sub>7</sub>  
281

Sweet Georgia Brown #1

285 B<sub>b</sub>7

289 E<sub>b</sub>7

293 F<sub>7</sub>

Sweet Georgia Brown #2

297 B<sub>b</sub>7

301 E<sub>b</sub>7

305 F<sub>7</sub>

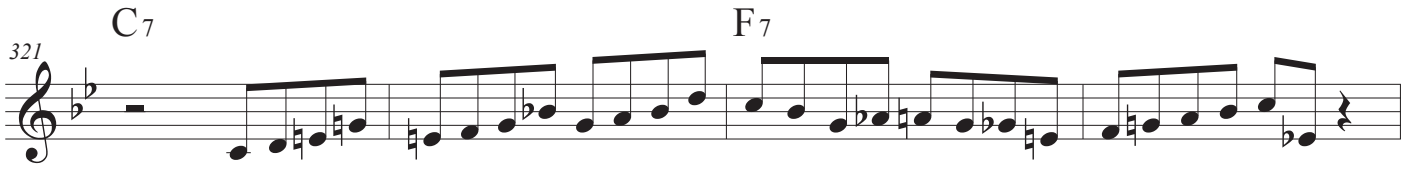
Sweet Georgia Brown #3

309 B<sub>b</sub>7

313 E<sub>b</sub>7



I've got rhythm middle 8 #1



I've got rhythm middle 8 #2



I've got rhythm middle 8 #3



I've got rhythm middle 8 #4

